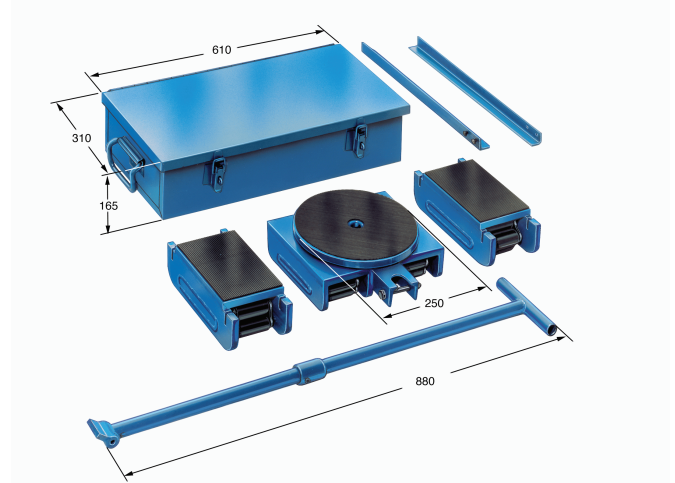


Roller Skate - Complete Transport Kit

Model Hercules

- With the Hercules you do not have to waste time by assembling the unit and the low level contributes to safer working conditions.
- The Hercules makes it easier and safer to move heavy loads. 24 and 30mm diameter rollers in the chain are available. This turntable is larger than the one in the transport Kit of N Series.
- For larger loads we recommend the use of a second twin Skater Roller with one turntable in the front and two normal Roller Skates as a stabiliser at the back.



Size	Rolls ø Z	Rolls ø E	Width bearing	Length bearing	Height	Turntable ø	Cap. per set KN	Wt. per set kg
Hercules	30	24	130	200	110	250	350	68

- 1 Twin Skate Roller with fitted turntable
- 2 Roller Skates with fitted top plates
- 1 metal box 1 handle 1 link-up bar

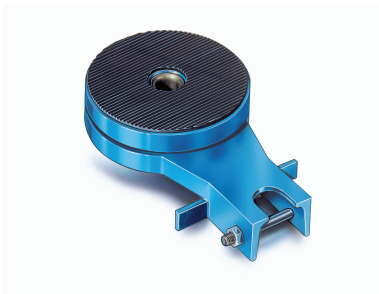
Model N

- For short variable ways of transportation.
- Movement of moderately heavy loads, e.g. machines, parts of machines and for installation works.
- Allows to turn corners by using turntables and packing plates.

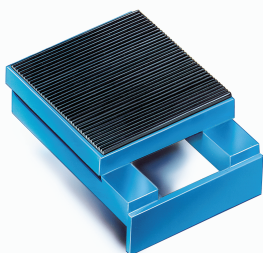
Size	Rolls ø Z	Length bearing	Width bearing	Height	Turntable ø	Cap. per set KN	Wt. per set kg
I	18	120	120	108	130	200	48
II	24	120	120	117	130	300	56
III	30	130	130	140	150	600	90



Accessories only for Model N



Turntables



Packing plates

Roller Skate Express - The Solids Model N



Size	No. of Rolls	Cap. per set KN	Wt. per set kg
I	15	100	5.2
II	13	150	7.3
III	13	300	13
IV	13	600	32
V	17	800	61

Roller Skate - For Simple Transportation

Model C

Range of application:

- For short distances.
- Movement of moderately heavy loads e.g. to transport materials in ovens, for shuttering, concreting or stocking techniques.
- Can be welded to the load.
- Ideal model for confined spaces.

Key features

- Stable, solid basic construction.
- Low level construction and smooth top achieved after welding, models C and B are the same height.
- Can be welded to the load to ensure Roller Skates and load are firmly connected.
- Available with hardened center plate (=models C-H) or additional with higher tensile roller material 50CrV4 (=models C-H-50CrV4).

Mod C, C-H

(H= hardened and machined center plate)

C-H-50CrV4

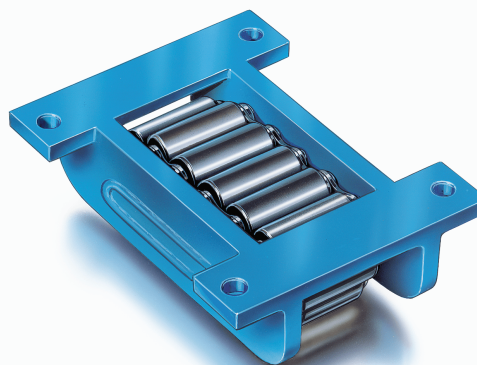
(roller material 50CrV4)

Roller Skate Express – The Solids



Size	No. of Rolls	Cap. per set KN	Wt. per set kg
I	15	100	5
II	13	150	7
III	13	300	12.5
IV	13	600	32
V	17	800	61

Roller Skate Express - The Robusts



Size	No. of Rolls	Cap. per set KN	Wt. per set kg
I	15	100	6.2
II	13	150	8.4
III	13	300	14.1
IV	13	600	36.5
V	17	800	66.4

Roller Skate - for bad working conditions

Model B

Range of application:

- For short distances.
- Movement of medium loads, eg. feed scaffolding and concrete formwork on construction sites.
- Can be bolted to the load at the lowest height.

Key features

- Stable, solid basic construction
- Low level is achieved by recessing the mounting plates into side walls. Model... B and ...C are the same height.
- Model B-H (with hardened centerplate) is used, when the roller skate is not moved for a long time under high load. As a result, a pressing of the hardened steel rollers in the standard non-hardened central plate is prevented and ensures a uniformly low rolling resistance.
- Model B-H-50CrV4 (roll material 50CrV4) is recommended if the risk of short-term overload beyond the specified bearing capacity of the roller skates can not be excluded or is probable.

Mod B, B-H

(H= hardened and machined center plate)

B-H-50CrV4

(roller material 50CrV4)

Roller Skate - for bad working conditions/short distance

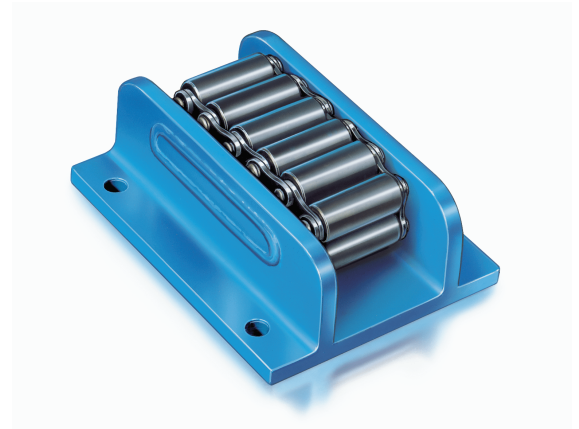
Models A, A-H

Range of application:

- For short displacement routes.
- Transports heavy loads in mining, steel, machine and bridge construction or as heavy roller conveyors.
- Particularly stable construction through continuous cover plate.
- Can be bolted to the load.
- H= hardened and machined center plate.

Key features

- Robust overall construction (frame construction).
- Low overall height with high load capacity, identical in dimensions with AS+AM series.
- Firm connection, because the load or cover plate can be screwed.
- Most stable load absorption and distribution.
- Model A-H (with hardened center plate) is used when the roller-skate is not moved under high load for a long time. As a result, a pressing of the hardened steel rolls is prevented in the standard non hardened center plate and ensures a uniformly low rolling resistance.
- Model A-H-50CrV4 (roll material 50CrV4) is recommended if the risk of short term overload beyond the specified bearing capacity of the rollerskates can not be excluded or is probable.



Size	No. of Rolls	Cap. per set KN	Wt. per set kg
I	15	150	8.9
II	13	200	11.7
III	13	400	19.3
IIIV	17	500	29
IV	13	650	51
V	17	850	92

Roller Skate-for permanent loads/longer distances

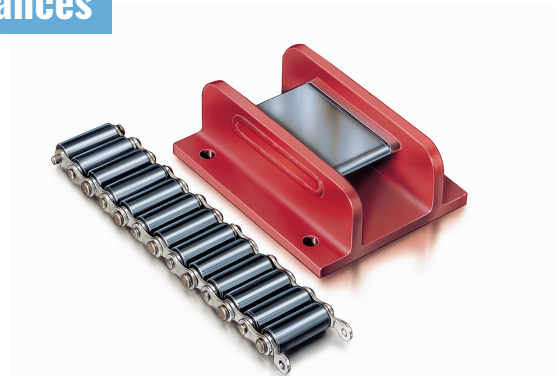
Model AS-H

Range of application:

- For longer distances and/or permanent loads on suitable tracks, crane rails or steel beams.
- Movement of heavy loads for longer distances or for progressive shifting of scaffolding and shuttering in bridge construction. Also used for hangar doors (hardened shelters), as crawler tracks, in nuclear power stations, in institutes for nuclear research, on oil rigs, in the ship building industry and for tunnel constructions.
- Particularly stable construction through continuous cover plate.
- Particular wear-resistant due to chain guide (no lateral starting of the chain, thus no wear of the bolt heads).
- Can be bolted to the load.

Key features

- Extra robust construction.
- Low level construction with higher carrying capacity, exchangeable with models ...AM and ...A due to same outer dimensions.
- More stability achieved, if load is firmly bolted to roller skates.
- More stable operation and distribution of load.
- Reduced wear by center plate chain guide (no contact between chain and sidewalls, no wear to rivet heads).



Size	No. of Rolls	Cap. per set KN	Wt. per set kg
III	13	400	19.6
IIIV	17	500	29.5
IV	13	650	51.7
V	17	850	93
VL	23	1000	109
VV	23	1500	162
VI	31	2000	266

Model AS-H

(H= hardened and machined center plate)

AS-H-50CrV4

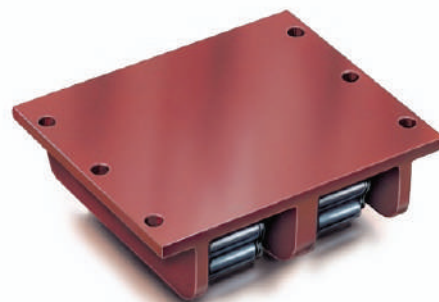
(roller material 50CrV4)

Roller Skate - For longer distance / extreme point loads

Model AM-H / ZAM-H

Range of application:

- For longer distances and repeat journeys with permanent loads.
- On suitable tracks like crane rails or steel beams.
- Use as a conveyor, when the load is moving and the Roller Skates are fixed.
Triple Roller Skates or Multiple Roller Skates on request.



MOD. AM-H

(H= hardened and machined center plate)

AM-H-50CrV4

(roller material 50CrV4)

Size	No. of Rolls	Cap. per set KN	Wt. per set kg
I	15	125	8.8
II	13	170	11.5
III	13	330	19
IIIV	17	420	28.5
IV	13	530	50
V	17	690	89.5
VL	21	880	104
Vv	23	1250	156
VI	31	1650	237

MOD. ZAM-H

(H= hardened and machined center plate)

ZAM-H-50CrV4

(roller material 50CrV4)

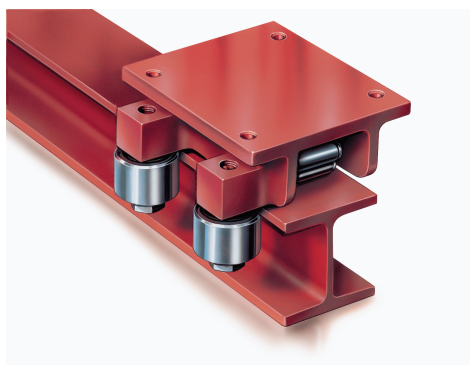
Size	No. of Rolls	Cap. per set KN	Wt. per set kg
I	2 x 15	250	16
II	2 x 13	340	22
III	2 x 13	660	35
IIIV	2 x 17	840	55.5
IV	2 x 13	1060	92.5
V	2 x 17	1380	168
VL	2 x 21	1760	197
Vv	2 x 23	2500	294
VI	2 x 31	3300	432

For permanent loads / longer distances

Lateral Guide Roller

Range of application:

- For longer distances and repeat journeys with permanent loads.
- On suitable tracks such as crane rails or steel beams.
- Used as a conveyor.
For extreme load bearing points.



MOD. A-H-FR

MOD. AS-H-FR

MOD. AM-H-FR

Size	Admissible Radial Force per Guide Roller (kN)
I	10
II	10
III	10
IIIV	10
IV	100
V	100
Vv	150
VI	150